

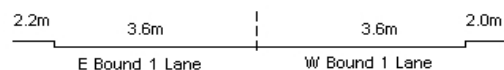
YEAR 2018

COVERAGE (B) STATION 2204

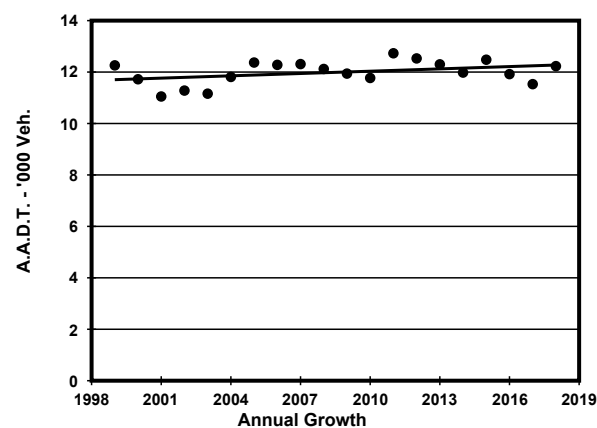
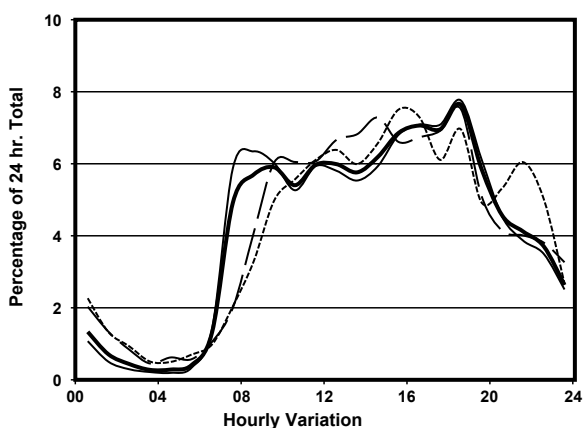
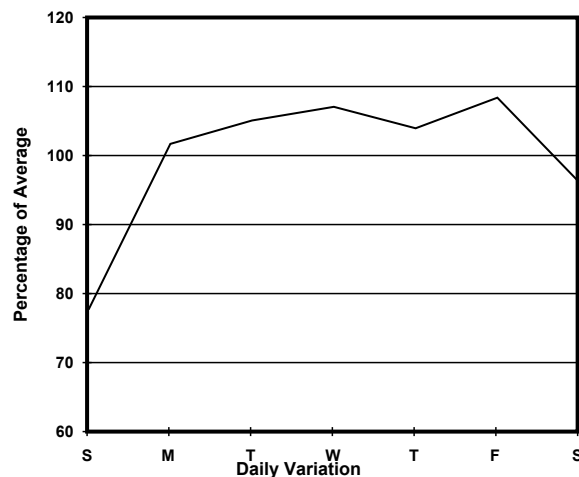
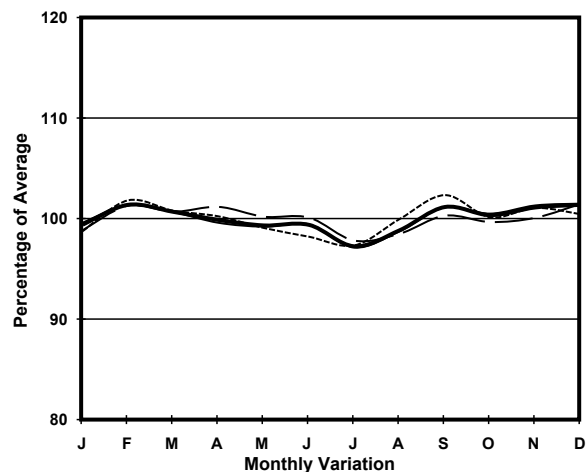
ROAD NETWORK MAJOR

ROAD TYPE DISTRICT DISTRIBUTOR

LINK YEE KING RD & LAI TAK TSUEN RD (from CLOUD VIEW RD to TAI HANG RD)



1. TRAFFIC FLOW VARIATION AND GROWTH



— All day — Mon.- Fri. Sat. - - - - Sun.

2. TRAFFIC CHARACTERISTICS (BY DIRECTION)

| Parameter | All - Day | Mon. - Fri. | Sat. | Sun. |
|--------------------------------------|-----------|-------------|-----------|-----------|
| EAST BOUND | | | | |
| A.A.D.T. | 7270 | 7670 | 7120 | 6020 |
| R 12 / 24 - % | 72.1 | 73.2 | 70.5 | 66.7 |
| R 16 / 24 - % | 92 | 93 | 88.9 | 89.5 |
| AM Peak Hour | 0900-1000 | 0800-0900 | 0900-1000 | 0900-1000 |
| One-way flow at AM peak hour | 400 | 450 | 410 | 320 |
| T - % (AM) | - | 7.5 | - | - |
| PM Peak Hour | 1800-1900 | 1800-1900 | 1800-1900 | 1600-1700 |
| One-way flow at PM peak hour | 570 | 620 | 550 | 430 |
| T - % (PM) | - | 7.3 | - | - |
| Prop.of commercial vehicles - 16 hr. | - | 9.9 | - | - |
| WEST BOUND | | | | |
| A.A.D.T. | 4960 | 5360 | 4790 | 3600 |
| R 12 / 24 - % | 77.6 | 78.6 | 76.1 | 72.3 |
| R 16 / 24 - % | 93.4 | 94.1 | 91.2 | 91.1 |
| AM Peak Hour | 0900-1000 | 0800-0900 | 0900-1000 | 0900-1000 |
| One-way flow at AM peak hour | 320 | 380 | 310 | 160 |
| T - % (AM) | - | 9.4 | - | - |
| PM Peak Hour | 1800-1900 | 1800-1900 | 1700-1800 | 1800-1900 |
| One-way flow at PM peak hour | 370 | 390 | 350 | 280 |
| T - % (PM) | - | 2.2 | - | - |
| Prop.of commercial vehicles - 16 hr. | - | 6.8 | - | - |

3. OTHER INFORMATION AND COMMENT

4. Vehicle classification and occupancy - Monday to Friday

| Time | | Class of vehicle | | | | | | | | | |
|------------------------|-----|------------------|----------------|------|---------------|------|------------|-------|----------------|---------|------|
| | | Motor Cycle | Private Car | Taxi | Private LB | PLB | Goods veh. | | Non Fr. Bus | Fr. Bus | |
| | | | | | | | Light | M & H | | SD | DD |
| 0700-0800 | Pro | 0.0 | 40.6 | 16.7 | 7.2 | 8.4 | 1.2 | 0.0 | 17.9 | 3.3 | 4.8 |
| | Ocp | 0.0 | 1.6 | 2.0 | 4.2 | 12.4 | 1.0 | 0.0 | 11.7 | 18.2 | 19.4 |
| 0800-0900 | Pro | 0.0 | 70.8 | 11.6 | 3.4 | 2.6 | 3.0 | 0.9 | 3.4 | 1.7 | 2.6 |
| | Ocp | 0.0 | 1.4 | 1.9 | 5.5 | 14.3 | 1.6 | 1.5 | 11.8 | 17.9 | 10.8 |
| 0900-1000 | Pro | 2.3 | 68.1 | 11.0 | 0.0 | 3.7 | 7.8 | 0.5 | 2.7 | 1.6 | 2.4 |
| | Ocp | 1.0 | 1.5 | 1.8 | 0.0 | 11.0 | 2.0 | 2.0 | 1.0 | 9.9 | 10.3 |
| 1000-1100 | Pro | 1.1 | 65.4 | 13.9 | 2.2 | 4.4 | 6.1 | 0.0 | 2.8 | 1.7 | 2.5 |
| | Ocp | 1.0 | 1.3 | 1.7 | 3.0 | 8.9 | 1.6 | 0.0 | 2.0 | 10.0 | 6.7 |
| 1100-1200 | Pro | 0.7 | 63.7 | 9.8 | 2.0 | 4.6 | 11.1 | 0.7 | 3.3 | 1.6 | 2.8 |
| | Ocp | 1.0 | 1.4 | 1.8 | 8.0 | 7.6 | 1.2 | 2.0 | 2.8 | 13.5 | 11.7 |
| 1200-1300 | Pro | 1.7 | 65.7 | 11.6 | 2.2 | 4.4 | 6.6 | 1.1 | 3.3 | 2.1 | 1.4 |
| | Ocp | 1.3 | 1.7 | 2.0 | 2.8 | 12.0 | 1.4 | 1.0 | 5.8 | 15.0 | 10.5 |
| 1300-1400 | Pro | 0.6 | 47.2 | 24.6 | 2.5 | 3.8 | 10.1 | 0.0 | 6.9 | 1.9 | 2.4 |
| | Ocp | 2.0 | 1.6 | 1.9 | 3.5 | 11.8 | 1.9 | 0.0 | 4.3 | 12.2 | 11.3 |
| 1400-1500 | Pro | 1.8 | 64.0 | 12.9 | 3.5 | 3.5 | 7.6 | 0.6 | 2.4 | 1.8 | 1.9 |
| | Ocp | 1.0 | 1.5 | 1.9 | 2.8 | 13.8 | 1.7 | 1.0 | 2.8 | 12.7 | 7.0 |
| 1500-1600 | Pro | 0.0 | 43.2 | 24.0 | 2.4 | 0.6 | 13.2 | 0.6 | 12.0 | 1.7 | 2.4 |
| | Ocp | 0.0 | 1.7 | 2.2 | 5.5 | 17.0 | 1.8 | 2.0 | 4.1 | 25.1 | 11.9 |
| 1600-1700 | Pro | 1.0 | 60.7 | 16.2 | 2.9 | 1.9 | 7.6 | 0.0 | 6.2 | 1.1 | 2.4 |
| | Ocp | 1.0 | 1.7 | 1.9 | 2.5 | 15.3 | 1.8 | 0.0 | 8.0 | 18.1 | 11.2 |
| 1700-1800 | Pro | 1.0 | 50.9 | 28.8 | 1.0 | 4.0 | 8.6 | 0.0 | 2.0 | 1.3 | 2.4 |
| | Ocp | 1.0 | 1.5 | 2.1 | 2.0 | 12.5 | 1.8 | 0.0 | 6.0 | 14.5 | 15.6 |
| 1800-1900 Peak hour | Pro | 1.4 | 53.1 | 33.2 | 0.9 | 4.7 | 2.4 | 0.0 | 0.9 | 1.1 | 2.1 |
| | Ocp | 1.3 | 1.7 | 2.0 | 9.0 | 10.2 | 1.2 | 0.0 | 1.0 | 13.4 | 13.4 |
| 1900-2000 | Pro | 4.0 | 63.2 | 25.6 | 0.0 | 2.5 | 0.0 | 0.0 | 1.0 | 1.9 | 1.8 |
| | Ocp | 1.0 | 1.5 | 1.9 | 0.0 | 7.4 | 0.0 | 0.0 | 15.0 | 10.0 | 11.1 |
| 2000-2100 | Pro | 1.1 | 44.5 | 44.5 | 0.0 | 3.8 | 1.6 | 0.0 | 0.5 | 1.8 | 2.2 |
| | Ocp | 1.0 | 1.5 | 2.1 | 0.0 | 6.9 | 1.3 | 0.0 | 21.0 | 8.5 | 8.4 |
| 2100-2200 | Pro | 1.6 | 50.6 | 36.4 | 0.0 | 4.0 | 2.4 | 0.0 | 0.8 | 2.2 | 2.2 |
| | Ocp | 1.0 | 1.7 | 1.7 | 0.0 | 8.8 | 2.0 | 0.0 | 12.0 | 6.5 | 7.1 |
| 2200-2300 | Pro | 1.6 | 44.7 | 40.7 | 0.0 | 4.1 | 3.3 | 0.0 | 0.0 | 2.6 | 3.0 |
| | Ocp | 1.0 | 1.5 | 1.8 | 0.0 | 6.4 | 1.5 | 0.0 | 0.0 | 7.8 | 4.9 |
| 16 hours | Pro | 1.3 | 57.4 | 22.1 | 1.8 | 3.6 | 5.9 | 0.3 | 3.7 | 1.7 | 2.4 |
| | Ocp | 1.1 | 1.6 | 1.9 | 4.2 | 10.7 | 1.7 | 1.5 | 6.5 | 13.2 | 10.9 |

Legend

Pro. Proportion of vehicles in % (Sum may not add up to 100% due to figure rounding)*

Ocp. Average occupancy of vehicles including both driver and passengers*

M&H Medium and Heavy

***** All traffic data are collected from combined bounds except for one way traffic